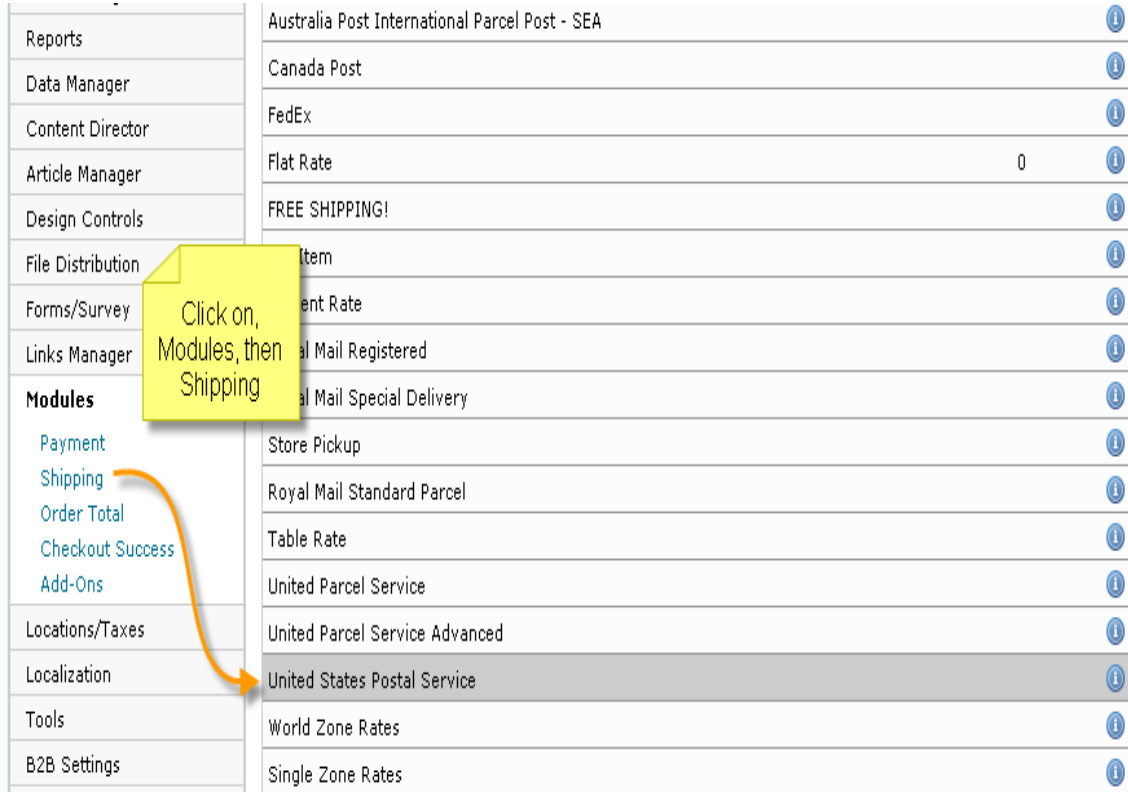


USPS Shipping Module Installation

You need to login to your cart admin panel, click on modules then select shipping on the left navigation (If DHTML menu enabled you will get the menu on the header) of your cart admin, as shown in the below image.



Reports	Australia Post International Parcel Post - SEA	i
Data Manager	Canada Post	i
Content Director	FedEx	i
Article Manager	Flat Rate 0	i
Design Controls	FREE SHIPPING!	i
File Distribution	Item	i
Forms/Survey	ent Rate	i
Links Manager	al Mail Registered	i
Modules	al Mail Special Delivery	i
Payment	Store Pickup	i
Shipping	Royal Mail Standard Parcel	i
Order Total	Table Rate	i
Checkout Success	United Parcel Service	i
Add-Ons	United Parcel Service Advanced	i
Locations/Taxes	United States Postal Service	i
Localization	World Zone Rates	i
Tools	Single Zone Rates	i
B2B Settings		

Select the module “**United States Postal Service**” from the shipping module list as shown in the above image. You will get an install option in the right hand box. Click the “**Install**” button to get your USPS installed. Once you install the module, USPS will add default values and you can see that in the right hand box.

To Edit, click on the **"Edit"** button, update the User ID that you received from the USPS and other USPS setting. Save the changes. You can refer to the below image for an example.

Modules	Sort Order	Action	United States Postal Service
Australia Post Parcel Post			<div style="text-align: right;"> <input type="button" value="Remove Module"/> <input type="button" value="Edit"/> </div> <p>United States Postal Service v3.0.4</p> <p>You will need to register for a USPS account to use this module.</p> <p>USPS uses pounds and ounces as weight measure for your products.</p> <p>Enable USPS Shipping True</p> <p>Enter the USPS User ID NONE</p> <p>Which server to use production</p> <p>Handling Fee 0</p> <p>Tax Class --none--</p> <p>Shipping Zone --none--</p> <p>Sort Order 0</p> <p>USPS Options Display weight, Display transit time</p> <p>Domestic Shipping Methods EXPRESS, PRIORITY, FIRST CLASS, PARCEL, BMP, LIBRARY, MEDIA,</p> <p>Int'l Shipping Methods</p>
Australia Post International Parcel Post - AIR			
Australia Post International Parcel Post - Economy			
Australia Post Express Post Parcel			
Australia Post International Parcel Post - SEA			
Canada Post			
FedEx			
Flat Rate	0		
FREE SHIPPING!			
Per Item			
Percent Rate			
Royal Mail Registered			
Royal Mail Special Delivery			
Store Pickup			
Royal Mail Standard Parcel			
Table Rate			
United Parcel Service			
United Parcel Service Advanced			
United States Postal Service	0		
World Zone Rates			
Single Zone Rates			

Module Directory: D:/Mahesh/wamp/www/cre_test641/CREB2B641/includes/modules/shipping/

You can set the Shipping Zone, tax Zone, Handling Fee and USPS method that you want to offer by editing the module as shown above.

This will install your USPS and you can view it on the cart end on the checkout pages.

Steps to upload USPS module files on the server

These steps are to install fresh files of USPS module on the server.

To download the USPS module file you need to browse <http://creloaded.org>. Click on “**Extension**” on the left navigation bar, as shown in the below image,

The screenshot displays the 'Directory' page on the creloaded.org website. On the left, a 'MAIN MENU' sidebar lists various navigation options, with 'Extensions' highlighted by a blue arrow and a yellow callout box that reads 'Click on Extensions'. The main content area is titled 'Directory' and features a 'Categories' section with an alphabetical index (0-9 A B C D E F G H I J K L M N O P Q R S T U V W X Y Z). Below this, several category listings are visible: 'Templates (5)' with items like CC7333_ATS, CRE Loaded 6.2 Evector ATS, and CRE Loaded 6.2 Helius ATS; 'Shipping Modules (2)' with items like TNTpost module and CRE Loaded USPS Shipping Module; 'Payment Modules (23)' with items like CRE Secure Payment Module for CRE Loaded (authorize.net, Orbital), IDEAL Advanced (Dutch Payment module), and 2Checkout Payment Module; 'Fixes (4)' with items like Configuration Server Time Updated Fix, One Page Checkout lowest shipping by default, and One Page Checkout Shipping Totals Fix; 'Shopping Cart Database Conversion Scripts (1)' with item Shopping Cart Database Conversion Scripts; 'Reports (0)'; 'Language Packs (4)' with items like Dutch language pack, French Language Pack, and German Language Pack; and 'Add-Ons (12)' with items like Admin Orders/Statuses Block from 6.2, Ajax Attribute Manager for CRE, and buySAFE - Module version 1.7 update.

Then you need to click the **Shipping Modules** tab on the main page, as shown in the below image.

- Forums
- **Extensions**
- Developer Showcase
- Store Showcase
- Feedback Forum
- The Progress Bar
- Extensions
- CRE Loaded 6.2
- Community News

Click on Shipping Modules



Categories

0-9 A B C D E F G H I J K L M N O P Q R S T U V W X Y Z

Templates (5)

- CC7333_ATS
- CRE Loaded 6.2 Evector ATS
- CRE Loaded 6.2 Hellus ATS

Shipping Modules (2)

- Dutch TNTpost module
- Updated USPS Shipping Module

Payment Modules (23)

Shopping Cart Database Conversion Scripts (1)

- Shopping Cart Database Conversion Scripts

Reports (0)

Language Packs (4)

Once you click on the **Shipping Modules** link on main page, you will get the list of shipping modules, click on **Updated USPS Shipping Module**, you will be redirected to the module download page. Click on the Zip file name "**USPS-CRE3-7.zip**" to download the module,

- ### MAIN MENU
- Home
 - **Forums**
 - Browse Forum
 - Search Forums
 - View Your Posts
 - View Unanswered Posts
 - View Active Topics
 - View New Posts
 - Forum Control Panel
 - Extensions
 - Developer Showcase

Directory

Updated USPS Shipping Module ^{New!}

Download Link www.creloadedexpert.com/addon-modules/cre-loaded-usps-update

Votes 0

Visited 0

File [USPS-CRE3-7.zip](#)

Version 3.7

License Commercial

Click on the zip file name to download

[Submit review](#) [Recommend](#) [Report](#) [Owner's listing](#)

Rating ☆☆☆☆☆ 0 vote

Favoured: 0

Save the Module zip file on your local machine, get it unzipped.

MAIN MENU

- Home
- Forums
 - Browse Forum
 - Search Forums
 - View Your Posts
 - View Unanswered Posts
 - View Active Topics
 - View New Posts
 - Forum Control Panel
- Extensions
 - Developer Showcase
 - Store Showcase
 - Feedback Forum
 - The Progress Bar
 - Freelance Market (BETA)
 - Developer Center
 - CRE Loaded Wiki
 - Community News

Directory

Updated USPS Shipping Module New!

Download Link www.creloadedexpert.com/addon-modules/cre-loaded-usps-update

Votes 0

Visited 0

File [USPS-CRE3-7.zip](#)

Version 3.7

License Commercial

Submit review

Rating  0 vote

This is not the version shipping in 6.4.1+ (its better) USPS Ver...
It was brought to our attention on Jan 4th, USPS made some c...
module.. Which turns out would not work with CRE Loaded.. C...
Missing, 5 international options.. We have redone the USPS m...

Instructions

VERY IMPORTANT

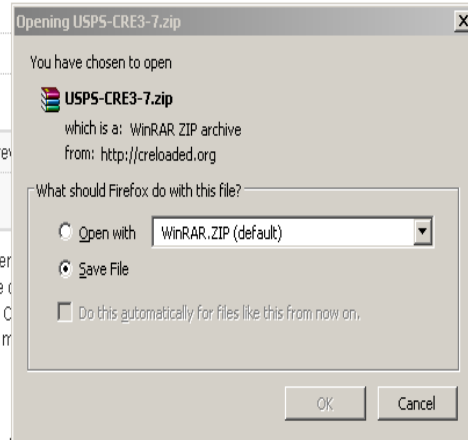
Log in to admin. Visit - Modules - Shipping - Select United States Postal Service module and uninstall/remove it if its installed

Unzip our file, USPS-CRE3-7.zip

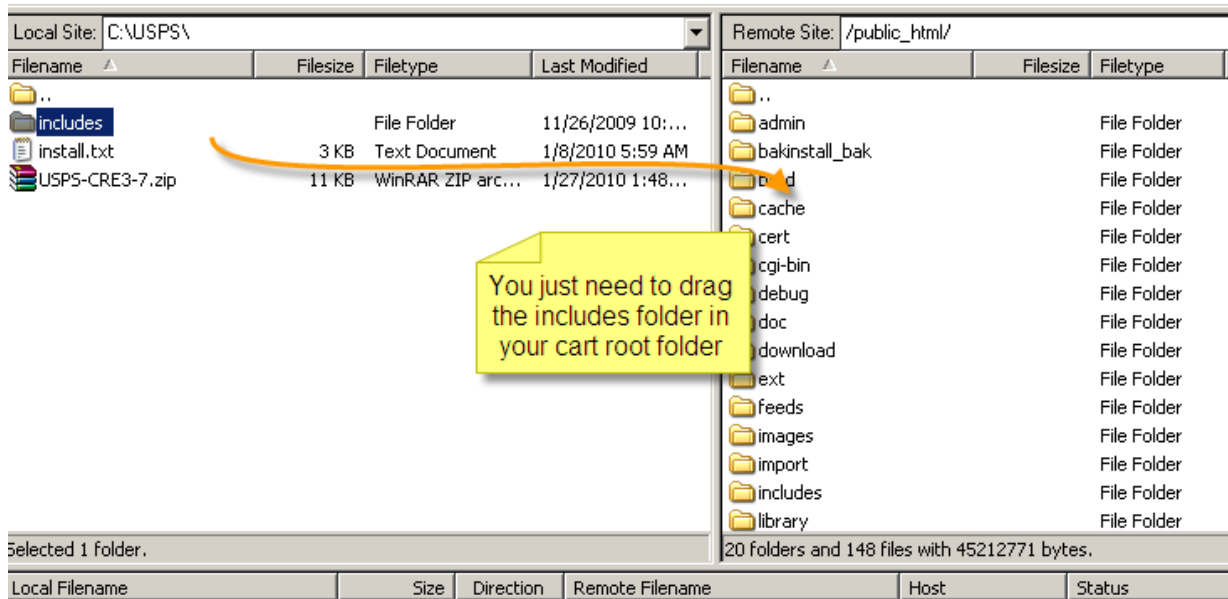
Upload the includes folder to your current sites store folder (which will include an includes folder)

Revisit admin, Modules- Shipping

Find United States Postal Service.. install it.. edit button- Now check which shipping options you want to offer Your customers. Keep in mind. GXG has 3



Once you unzip the files, connect to your server through FTP, browse to the folder, where you have stored the unzipped USPS files, the file structure should be as below for the modules unzipped file.



You should get includes, install.txt file in the unzipped folder as shown in the above image. Select includes folder and upload it as it is in your cart root folder, in the above image, the cart root folder is public_html, and it will vary depending on your server.

Once you complete the upload, login to your cart **admin panel** >> **modules** >> **shipping** and follow the install steps as specified in first part of the docs.

NOTE: The USPS module from creloaded.org will have a live production USPS web tools user id built into the module, and you will already have a working production number.

If you would like your own USPS web tools user id, please goto this link;
<https://secure.shippingapis.com/registration/>

Once you have your number, you will then need to contact USPS and request the number to be placed into "production" so it will be active.